

# CVD Clinical Innovation Fellows Information Webinar

25 January 2024





# Agenda

Introducing ICHP

NWL's Mission-led approach

Mission 1 – CVD Prevention, Detection and Optimisation

Who are we looking for?

Recruitment Logistics





## Who we are

**ICHP is a partnership organisation bringing together NHS providers of healthcare services, across our local Integrated Care System (ICS) and universities across North West London (NWL).**

ICHP is also the designated health innovation network for NWL - part of England's Health Innovation Network, established by NHS England.

We were created by the NHS to support complex change across the health and care sector - innovating and collaborating for a healthier population. We are motivated by our values of creating high quality impact, asking the difficult questions and bringing together the right people to solve a challenge.

# NWL's Mission-led approach

“Our ICS needs to become a learning system that applies best evidence to make sure we are doing the right things, avoiding the pressure to defend the status quo or expend effort implementing ineffectual and unevidenced initiatives. Doing this relies on a much more systematic use of research and innovation as a fundamental feature of how our ICS does its work. *To enable this, we will focus R&I efforts on a small number of priority missions...*”  
NWL ICB Strategy, 2023 (pg. 100)

## **Mission 1: Optimising care of Cardiovascular Disease (CVD)**

*By March 2029 we will have prevented 25% of heart attacks and strokes in NWL, whilst actively addressing health inequalities.*

## **Mission 2: Ensuring the right care setting to reduce harm**

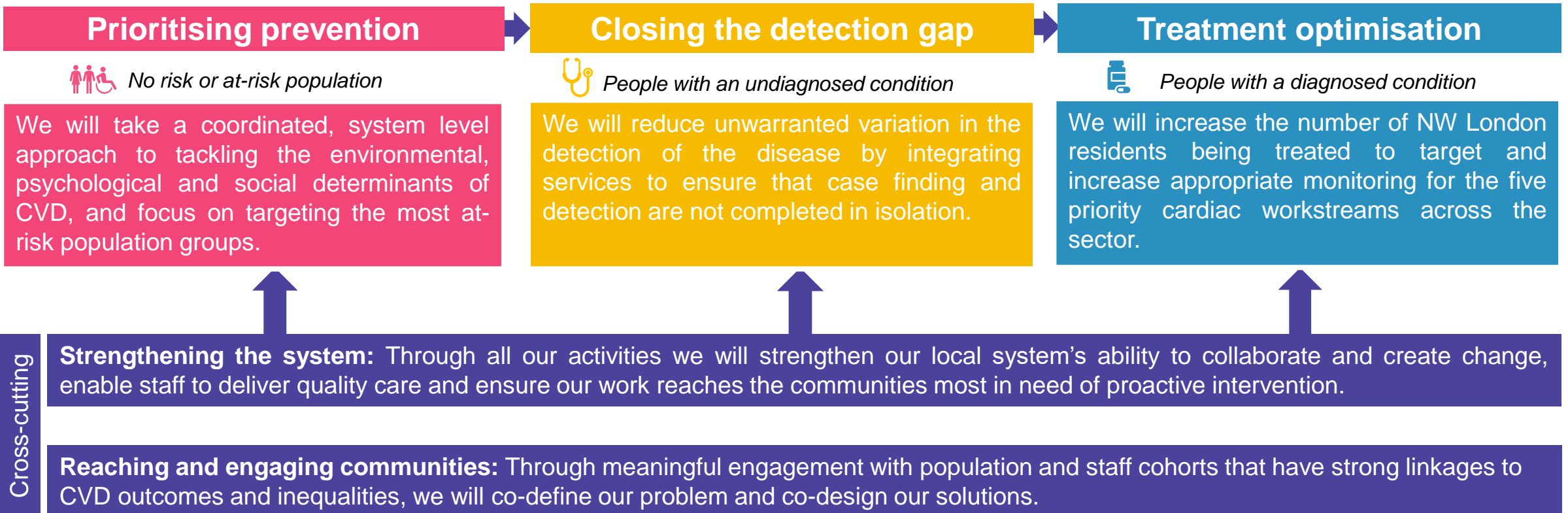
*By 2026 our NW London health and care system will enable 50,000 residents to spend 180,000 more days at home with the right support for them and their families. Residents will only spend days in a hospital, community, or mental health care bed when it is the best place to meet their health and care needs, and staff in all settings will feel they have the right resources to provide the best possible care*

## **Mission 3: Supporting Children and Young People's (CYP) mental health**

*By 2026, children and young people in NWL will have equitable, timely, and accessible care services that best promote mental wellbeing. CYP in NWL will not experience avoidable MH crises due to inequality, stigma or inaccessible care.*

# By March 2029, we will have prevented 25% of heart attacks and strokes in NWL, whilst actively addressing health inequalities

We will achieve this by creating a culture of care focusing on the **prevention, detection, and treatment optimisation** of CVD risk factors, prioritising intervention for those who are adversely affected by health inequalities in this disease area.



# Clinical Innovation Fellow Role

## As a Clinical Innovation Fellow, you dedicate 0.5 to 1 day per week towards:

- Developing and implementing new clinical innovations
- Identifying potential pilots, developing expertise and scaling innovation
- Providing clinical expertise, co-designing interventions and innovations, and helping to train other clinicians on how to use new innovations
- Working with a NWL mission team to contribute to setting the vision for innovation and the strategic direction of the innovation work
- Being a “critical friend” to innovators from multiple sectors including industry, academia and third sector to support the development of their ideas and ensure value to systems.

## Who we’re looking for:

- A talented, creative and positive clinician interested in innovation to support a more effective, efficient healthcare system
- It is important for us to recruit someone with a keen interest in innovation and we know this can come at any level
- Someone interested in health inequalities and using data to support population health management
- Someone motivated to work collaboratively with people of different backgrounds and sectors
- Someone working within NW London ICS, or with the ability to generate meaningful relationships with NW London stakeholders such as GPs.

# Recruitment Logistics

## Timelines

**Advert Close:** Friday 2nd February

**Shortlisting:** Monday 5th and Tuesday 6th February

**Interviews:** W/c 19th February

**Onboarding:** Approx. w/c 18th or 25th March 2024

## Remuneration

**Medics:** BMA agree rate for your current level

**Other Clinicians/AHPs:** Band 8a or your current banding whichever is higher

## Contracting Options

1. **Bank** – enrolling to the Chelsea and Westminster NHS Foundation Trust Bank
2. **Secondment** – seconding from your current employer
3. **Contractor** – invoicing ICHP direct as a private contractor (Note: must be registered as a company/sole trader)

**Questions**





# Thank you

✉ [ea@imperialcollegehealthpartners.com](mailto:ea@imperialcollegehealthpartners.com)

🐦 [@ldn\\_ichp](https://twitter.com/ldn_ichp)

in [linkedin/imperialcollegehealthpartners](https://www.linkedin.com/company/imperialcollegehealthpartners)

🌐 [Imperialcollegehealthpartners.com](https://www.imperialcollegehealthpartners.com)

