

National Suspicion of Sepsis (SOS) Insights Dashboard  
Webinar 6

# Taking the Suspicion of Sepsis Insights Dashboard into the Future

**Kenny Ajayi**

Programme Director– Patient Safety  
Imperial College Health Partners

**Julia Wilkins**

Head of Data & Analytics  
Imperial College Health Partners

## Kenny Ajayi

*Programme Director – Patient Safety  
Imperial College Health Partners*

## Julia Wilkins

*Head of Data & Analytics  
Imperial College Health Partners*

**#suspicionofsepsis**



**@Kennyajayi\_1 @JuliaIChp**

**@Ldn\_IChp**

# SOS Dashboard Access

[www.sos-insights.co.uk](http://www.sos-insights.co.uk)

- Retrospective data
- It is free at point of access
- Data is completely anonymised
- No data interoperability issues
- No patient consent issues

- Introduction
- National Sepsis Data Summit output
- Preview of Suspicion of Sepsis Insights Dashboard version 2
- Q & A –Live questions
- Updates
- Next steps

## National Sepsis Data Summit Output

- Key questions
- Process mapping of current data pathways - Hospital
- Process mapping of current data pathways - Out of Hospital
- Current challenges
- Possible solutions
- Suspicion of Sepsis Insights Dashboard version 2 spec

## National Sepsis Data Summit Output

- Key questions
- Process mapping of current data pathways - Hospital
- Process mapping of current data pathways - Out of Hospital
- Current challenges
- Possible solutions
- Suspicion of Sepsis Insights Dashboard version 2 Spec



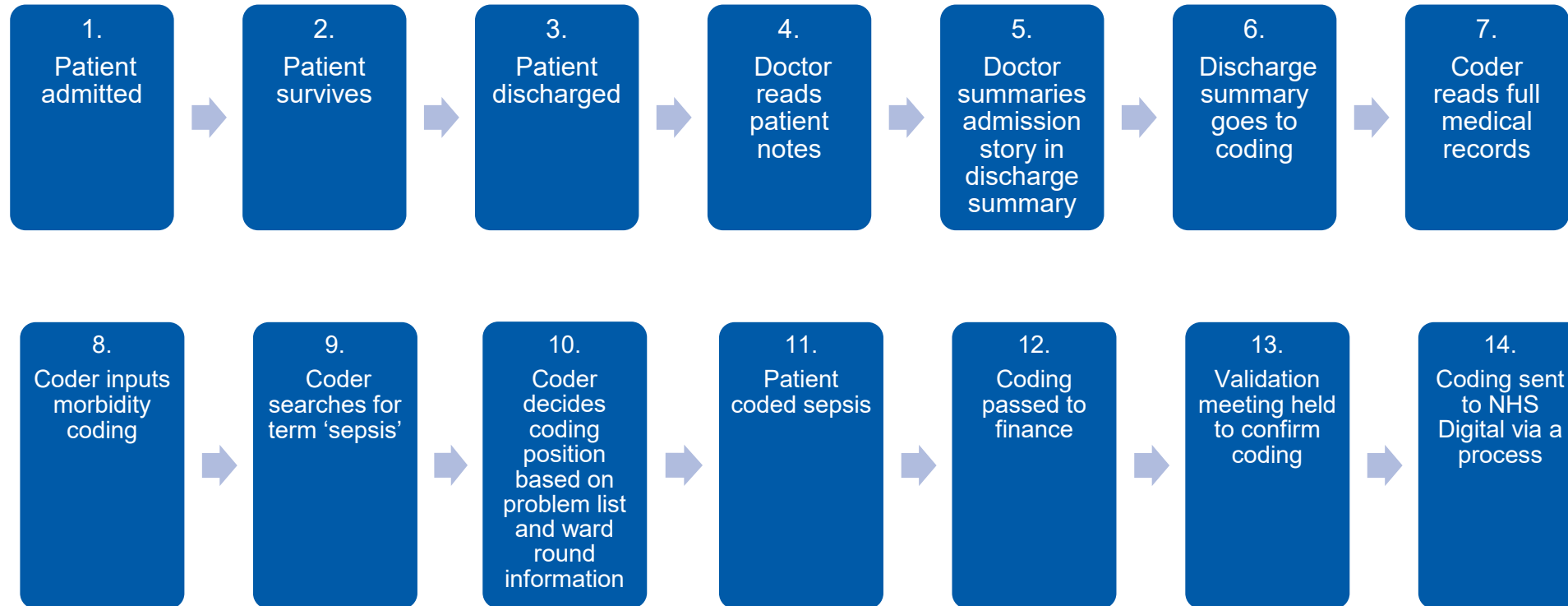
## Key Questions

1. How can we improve the quality of national sepsis data across care settings?
2. What are the current sepsis data pathways in and out of hospital settings?
3. What are the current barriers and challenges to good quality sepsis data?
4. What are the possible solutions to the problems?

**FAST | ACCURATE | BESPOKE | DATA**

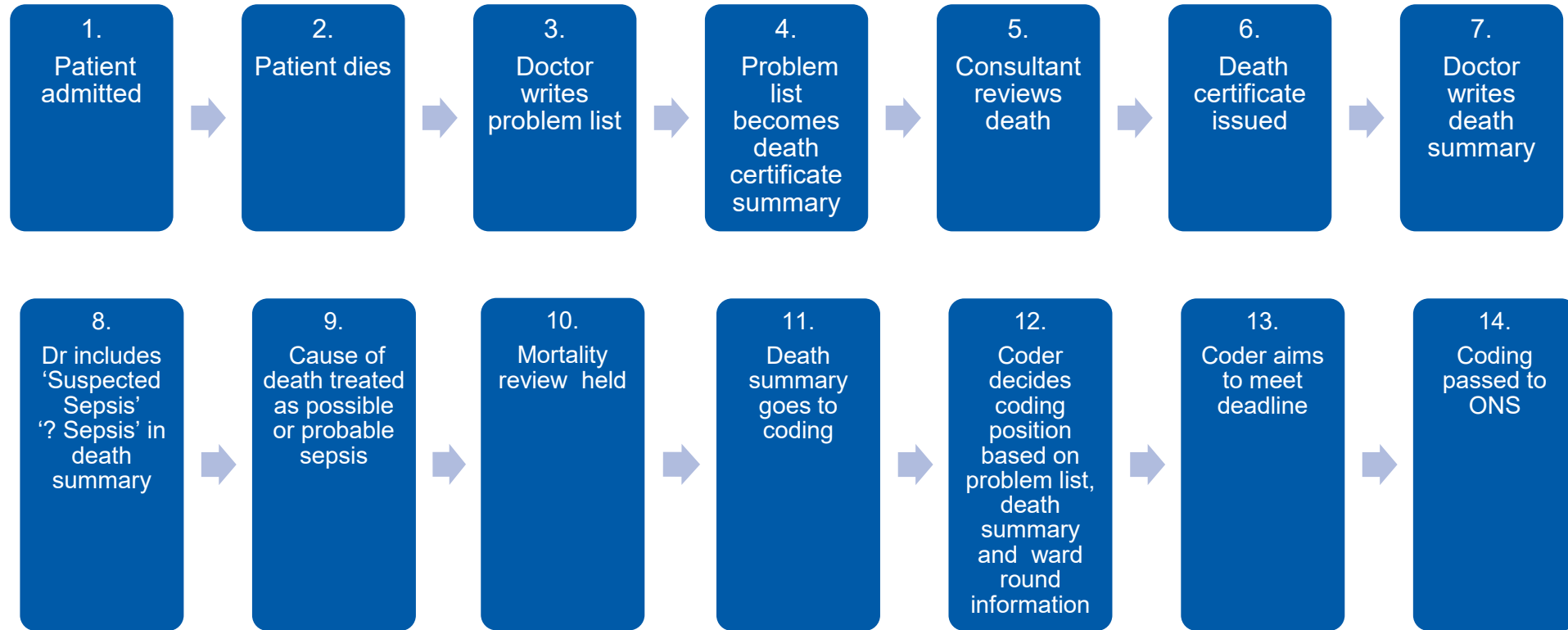
*Potentially saving thousands of lives.*

# Current Sepsis Data Pathway - Hospital [Patient survives]



**FAST | ACCURATE | BESPOKE | DATA**  
*Potentially saving thousands of lives.*

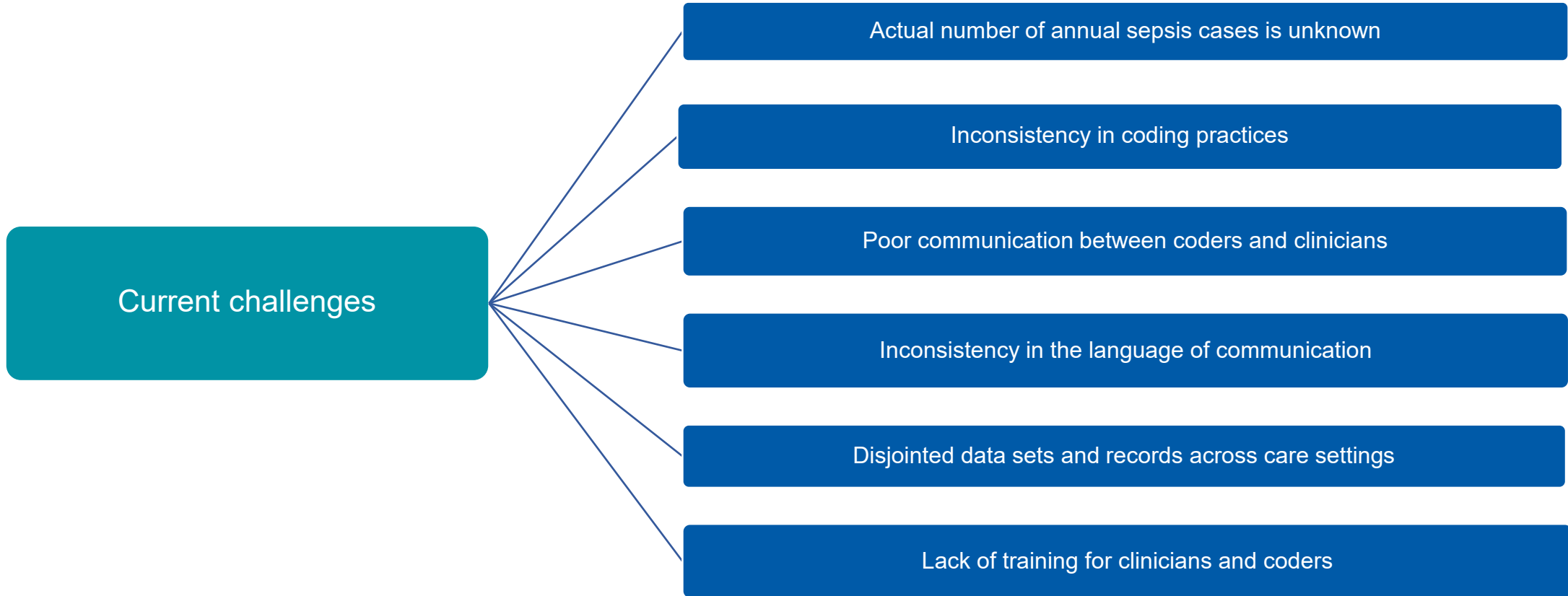
# Current Sepsis Data Pathway – Hospital [Patient dies]



**FAST | ACCURATE | BESPOKE | DATA**

*Potentially saving thousands of lives.*

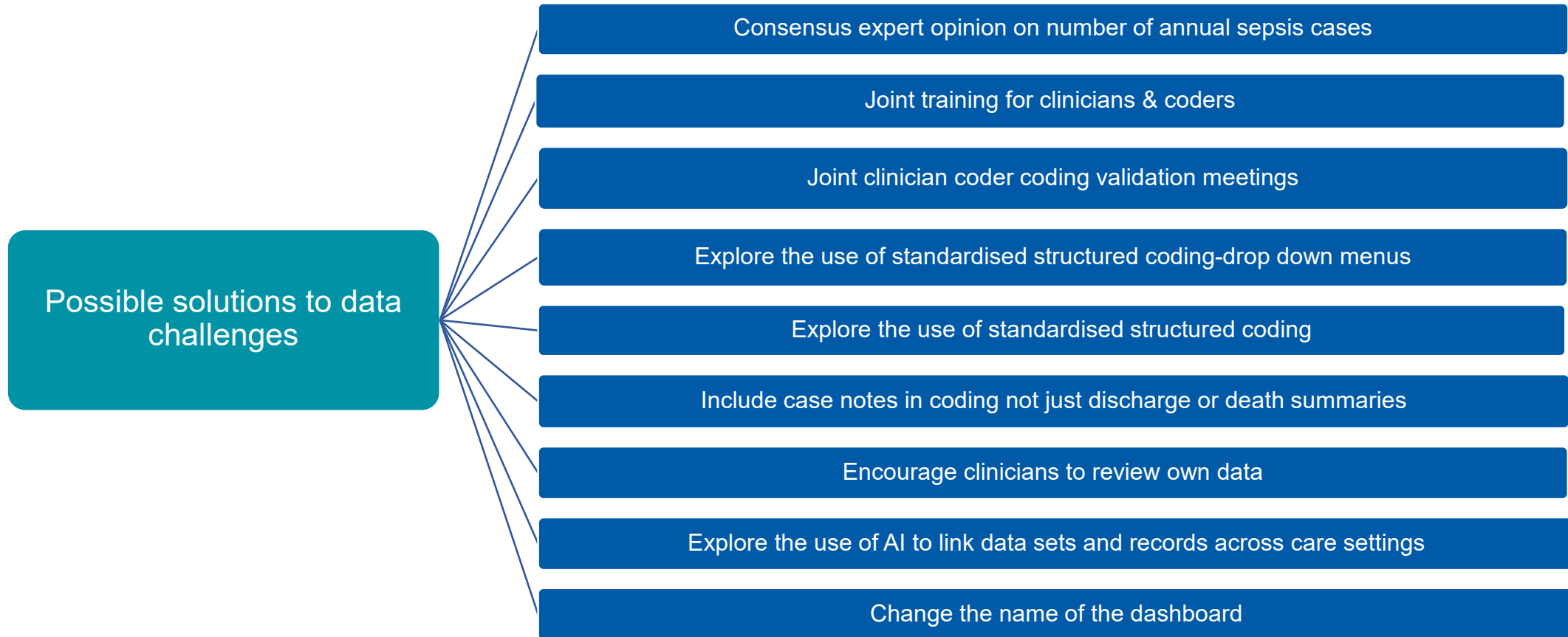
# Current challenges/ barriers to good quality Sepsis data



**FAST | ACCURATE | BESPOKE | DATA**

*Potentially saving thousands of lives.*

# Possible solutions to data challenges



**FAST | ACCURATE | BESPOKE | DATA**

*Potentially saving thousands of lives.*

## National Sepsis Data Summit Output

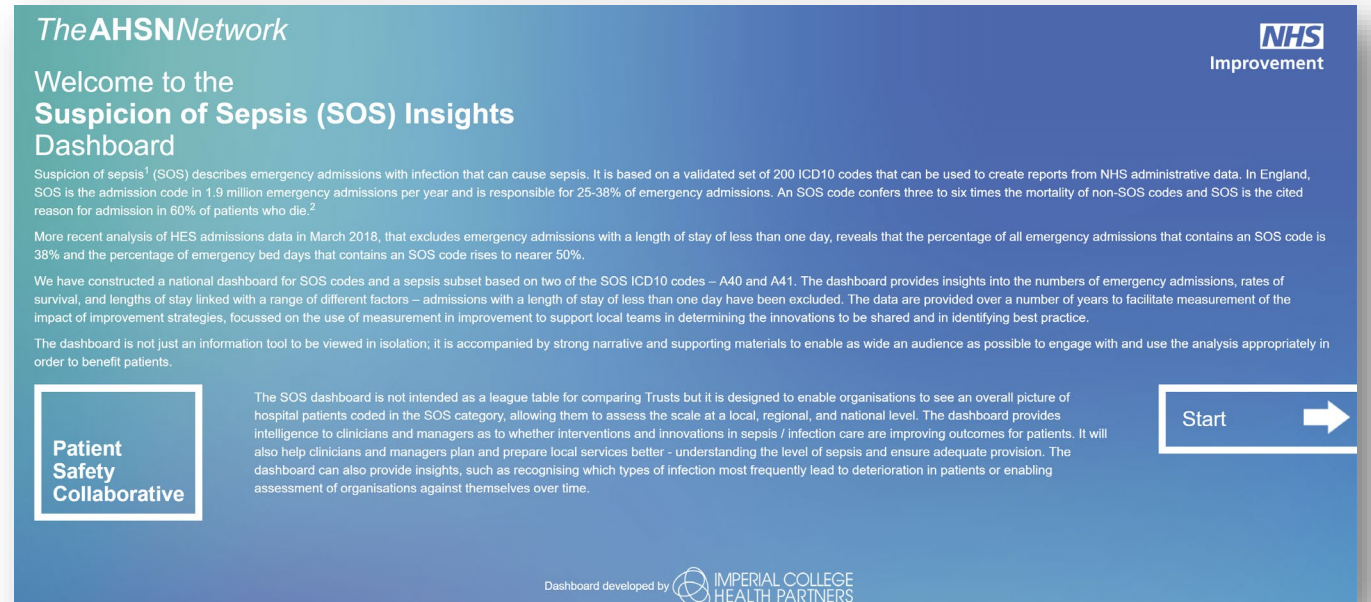
- Key questions
- Process mapping of current data pathways - Hospital
- Process mapping of current data pathways - Out of Hospital
- Current challenges
- Possible solutions
- Suspicion of Sepsis Insights Dashboard version 2 Spec

# Suggested iterations for SOS Dashboard

- **Organisation selector** - Ability to pick more than one organisation, and drill down to practice/PCN/ICS level
- **Time series** - Extend the monthly data to at least 5 years
- **Comparators** - User to select comparator organisation, understand variation across geographic areas or collections of organisations
- **Patient profiles** - Segment patient by frailty/ Charlson Comorbidity Index scores
- **Root-cause** - Understand the root-cause of sepsis i.e. was it hospital or community acquired, post-procedure, is it occurring in specific specialities, etc
- Include **insights** as to how trusts are **coding** locally e.g. which ICD10 code in which diagnostic position
- **Linking SOS to sepsis** i.e. which SOS diagnoses go on to develop sepsis
- In addition to absolute numbers, toggle **to rates** e.g. per 100K population
- Add in **forecasting**
- Add in **costs**
- Include **case studies** – sign-post to relevant research and evidence-based QI interventions
- **Age stratification**
- Present by **site** not by Trust
- Variable **diagnostic** position
- **Export** function

# Suspicion of Sepsis (SOS) Insights

- Publicly available NHS health data
- Emergency admissions excluding zero bed days and includes spells with sepsis/SOS codes in any diagnostic position (1-20)
- National dashboard
- Open and free to use for everyone
- Serves as a **platform fuel conversation** to effect **evidence based change**



The screenshot shows the dashboard interface. At the top left is the 'The AHSN Network' logo. At the top right is the 'NHS Improvement' logo. The main heading is 'Welcome to the Suspicion of Sepsis (SOS) Insights Dashboard'. Below this is a paragraph of introductory text: 'Suspicion of sepsis<sup>1</sup> (SOS) describes emergency admissions with infection that can cause sepsis. It is based on a validated set of 200 ICD10 codes that can be used to create reports from NHS administrative data. In England, SOS is the admission code in 1.9 million emergency admissions per year and is responsible for 25-38% of emergency admissions. An SOS code confers three to six times the mortality of non-SOS codes and SOS is the cited reason for admission in 60% of patients who die.<sup>2</sup>'

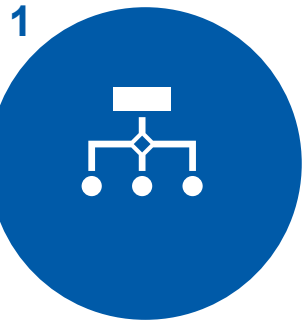
Below the text is a 'Patient Safety Collaborative' logo. To the right of the logo is a 'Start' button with a right-pointing arrow. At the bottom right, it says 'Dashboard developed by IMPERIAL COLLEGE HEALTH PARTNERS'.

**SOS admissions accounts for 25 – 30% of all unplanned admissions to hospital... so tackling SOS would have a huge impact on unplanned care over all.**



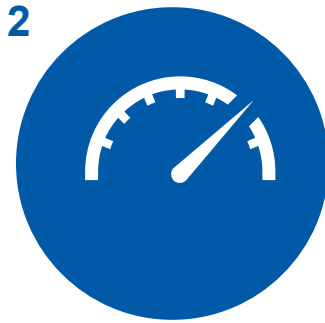
## Updates and next steps

# Next Steps



## Curate Ideas

- QI Focus
- Research
- Phasing



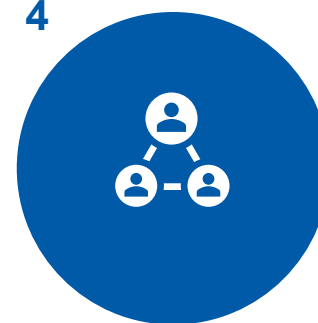
## Beta version

- SOS Dashboard
- Data refresh speed



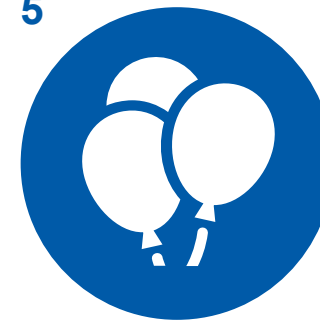
## Pilot

- Webinars
- Road shows
- Playback events
- Existing contacts



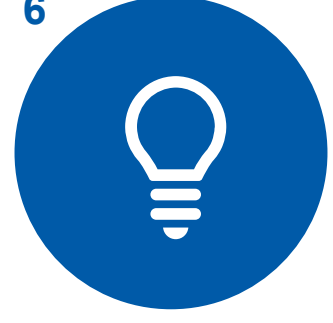
## Spread Strategy

- Collaborations
- Bidding
- Webinar presenters
- Contact us if you are using dashboard



## Launch

- Winter 2019
- National event
- Guidance document



## Replication

- Other Dashboards  
*e.g. Emergency Laparotomy*

Q & A



# Interested in collaborating?



[kenny.ajayi@imperialcollegehealthpartners.com](mailto:kenny.ajayi@imperialcollegehealthpartners.com)  
[Julia.wilkins@imperialcollegehealthpartners.com](mailto:Julia.wilkins@imperialcollegehealthpartners.com)



#suspicionofsepsis  
Twitter: @Kennyajayi\_1 @JuliaIChP  
@Ldn\_ICHP

Thank you